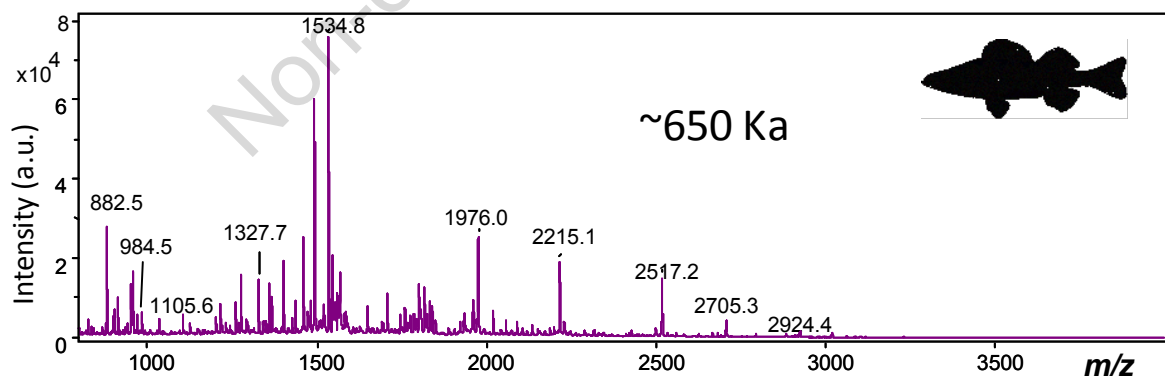
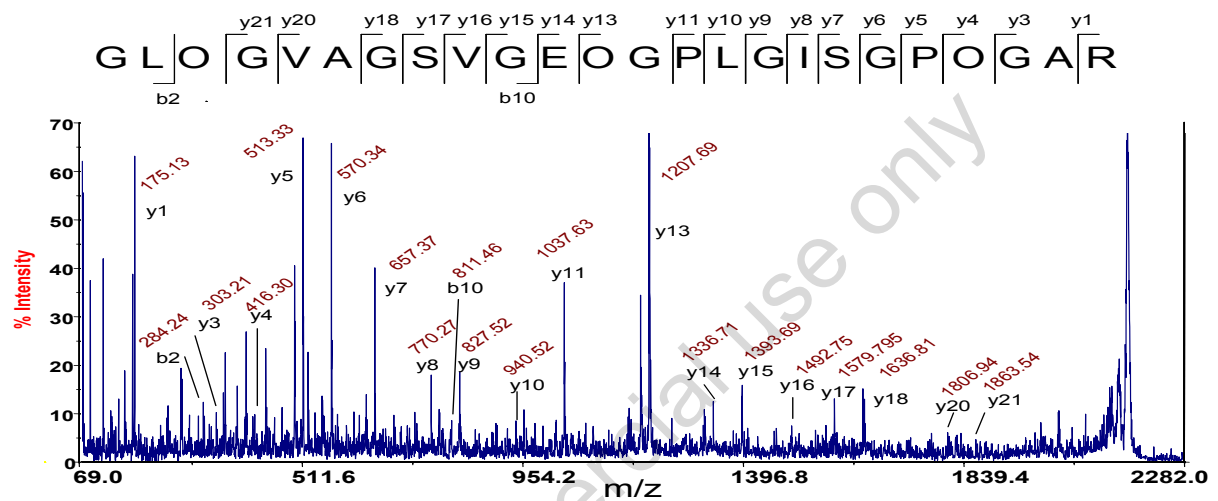


Supplementary Material

Isotopes on bulk collagen of sample from Wetwang Slack, average of 4 processings:

$d^{13}C = -22.1\text{‰}$; $d^{15}N = 5.5\text{‰}$

Original sample ID: WWH 4A - Context: WN 86 JV. Iron Age slot context a little north of the main cemetery area, containing animal bone.



Supplementary Table 1. Observation of peptide markers homologous with those reported elsewhere (Buckley *et al.* 2009). A = COL1A2T85, B = COL1A2T43, C = COL1A2T45, D = COL1A2T69, E = COL1A2T41/42, F = COL1A1T55/56, and G = COL1A2T67.

*Markers that could not be supported by genomic or proteomic sequence (MS/MS) data. X = previously unreported markers.

